

# ICC-ES Evaluation Report

ESR-5330

Reissued January 2025

This report also contains:


Revised May 2025

- [CA Supplement w/DSA and OSHPD](#)

Subject to renewal January 2026

ICC-ES Evaluation Reports are not to be construed as representing aesthetics or any other attributes not specifically addressed, nor are they to be construed as an endorsement of the subject of the report or a recommendation for its use. There is no warranty by ICC Evaluation Service, LLC, express or implied, as to any finding or other matter in this report, or as to any product covered by the report.

Copyright © 2025 ICC Evaluation Service, LLC. All rights reserved.

<b>DIVISION: 03 00 00 — CONCRETE.</b>  <b>Section: 03 15 00 — Concrete Accessories</b>  <b>Section: 03 21 00 — Reinforcement bars</b>	<b>REPORT HOLDER:</b>  <b>EARTHWISE PLASTIC CONCEPTS</b>	<b>EVALUATION SUBJECT:</b>  <b>ECO-DOBIE</b>	
---	--	--	---

## 1.0 EVALUATION SCOPE

Compliance with the following codes:

- 2024 and 2021 [International Building Code® \(IBC\)](#)
- 2024 and 2021 [International Residential Code® \(IRC\)](#)

Property evaluated:

- Physical

## 2.0 USES

The Eco-Dobie is a support used for placement of reinforcement in concrete construction, which provides concrete cover to the reinforcement during casting in accordance with ACI 318 and ACI 332.

## 3.0 DESCRIPTION

The Eco-Dobie is manufactured as a block, with a standard footprint of 3 in by 3 in (76 mm by 76 mm) and in heights of 1.5 in, 2 in and 3 in (38 mm, 51 mm, 76 mm). The Eco-Dobie is manufactured from a blend of recycled plastic that is either molten and pressed into the sizes previously described or extruded into a 3 in x 3 in (76 mm by 76 mm) beam mold and cut into the different heights. A 16 ga. wire used to secure uncoated steel reinforcement or a plastic zip tie used to secure coated or FRP reinforcement, is inserted into the top center of the Eco-Dobie or the 16 ga. wire is attached to the top of the Eco-Dobie using a 16 ga. staple.

The Eco-Dobie average water absorption is 0.34 percent. The Eco-Dobie allowable compression load, based on a factor of safety of 3, is 1250 lbs. (5.6 kN).

## 4.0 INSTALLATION

**4.1 Installation:** For IBC, Eco-Dobie must be installed in accordance with the applicable requirements of IBC Section 1901. Tolerance for reinforcement placement must be in accordance with ACI 318-19, Section 26.6.2. For IRC, Eco-Dobie must be installed in accordance with the applicable requirements of IRC Chapters 3, 4 and 5.

**4.2 Special Inspections:** When applicable, periodic special inspection for the reinforcement placement must be in accordance with Section 1705.3 and Table 1705.3 of the IBC.

## 5.0 CONDITIONS OF USE:

The Eco-Dobie described in this report complies with, or is a suitable alternative to what is specified in, those codes listed in Section 1.0 of this report, subject to the following conditions:

- 5.1 The Eco-Dobie must be installed in accordance with this report.
- 5.2 The Eco-Dobie is to be used within a working temperature range of 29°F to 150°F (-1.7°C to 65°C)
- 5.3 For special inspections see Section 4.2 of this report.
- 5.4 The Eco-Dobie is manufactured under a quality control program with inspections by ICC-ES.

## 6.0 EVIDENCE SUBMITTED

- 6.1 Water absorption testing of the Eco-Dobie in accordance with ASTM D570.
- 6.2 Compression testing of the Eco-Dobie in accordance with ASTM D695.
- 6.3 Quality control documentation in accordance with [ICC-ES Acceptance Criteria for Quality Documentation \(AC10\)](#), dated May 2022.

## 7.0 IDENTIFICATION

- 7.1 The ICC-ES mark of conformity, electronic labeling, or the evaluation report number (ICC-ES ESR-5330) along with the name, registered trademark, or registered logo of the report holder must be included in the product label.
- 7.2 The report holder's contact information is the following:

**EARTHWISE PLASTIC CONCEPTS**  
**895 LAWTON LANE**  
**TEMPLETON, CALIFORNIA 93465**  
**(805) 674-2674**  
[earthwiseplasticconcepts@gmail.com](mailto:earthwiseplasticconcepts@gmail.com)

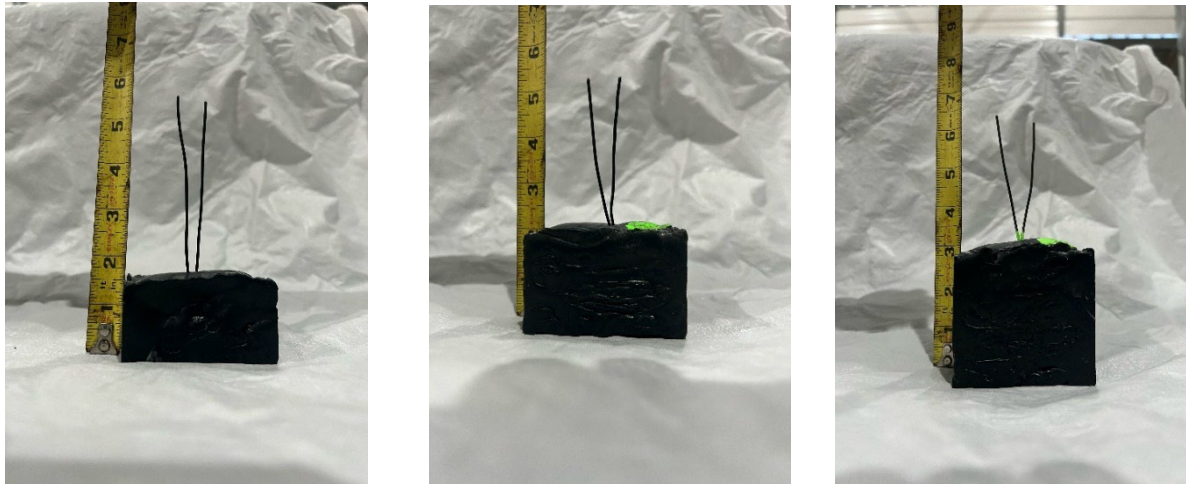


FIGURE 1—ECO DOBIES IN 1.5 in, 2 in, and 3 in HEIGHTS MANUFACTURED USING PRESS MOLDING.

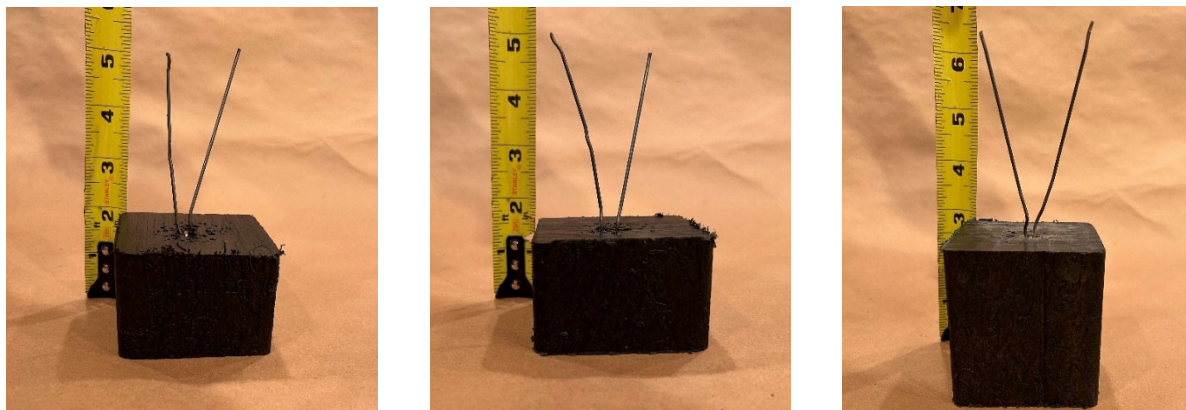


FIGURE 2—ECO DOBIES IN 1.5 in, 2 in, and 3 in HEIGHTS MANUFACTURED USING EXTRUDED BEAM MOLDING

# ICC-ES Evaluation Report

# ESR-5330 CA Supplement

w/ DSA and OSHPD

Reissued January 2025

Revised May 2025

*This report is subject to renewal January 2026.*

[www.icc-es.org](http://www.icc-es.org) | (800) 423-6587 | (562) 699-0543

A Subsidiary of the International Code Council®

**DIVISION: 03 00 00 - CONCRETE**

**Section: 03 15 00 Concrete Accessories**

**Section: 03 21 00 Reinforcement bars**

**REPORT HOLDER:**

**EARTHWISE PLASTIC CONCEPTS**

**EVALUATION SUBJECT:**

**ECO-DOBIE**

## 1.0 REPORT PURPOSE AND SCOPE

### Purpose:

The purpose of this evaluation report supplement is to indicate that the Eco-Dobie, described in ICC-ES evaluation report ESR-5330, has also been evaluated for compliance with the code(s) noted below.

### Applicable code edition(s):

- 2022 *California Building Code* (CBC)

For evaluation of applicable chapters adopted by the [California Office of Statewide Health Planning and Development \(OSHPD\) AKA: California Department of Health Care Access and Information \(HCAI\) and the Division of State Architects \(DSA\)](#), see Sections 2.1.1 and 2.1.2 below.

- 2022 *California Residential Code* (CRC)

## 2.0 CONCLUSIONS

### 2.1 CBC:

The Eco-Dobie, described in Sections 2.0 through 7.0 of the evaluation report ESR-5330, complies with CBC Chapter 19, provided the installation is in accordance with the 2021 *International Building Code*® (IBC) provisions noted in the evaluation report and the additional requirements of CBC Chapter 17 and 19, as applicable.

#### 2.1.1 OSHPD:

The Eco-Dobie, described in Sections 2.0 through 7.0 of the evaluation report ESR-5330, complies with CBC Chapters and amended sections in Chapters 17 [OSHPD 1R, 2, 3 and 5] and 19 [OSHPD 1R, 2, 3 and 5], and Chapters 17A [OSHPD 1 and 4] and 19A [OSHPD 1 and 4], provided the design and installations are in accordance with the 2021 *International Building Code* (IBC) provisions noted in the evaluation report and the additional requirements of CBC Chapters 17, 17A, 19 and 19A as applicable.

#### 2.1.2 DSA:

The Eco-Dobie, described in Sections 2.0 through 7.0 of the evaluation report ESR-5330, complies with CBC Chapters and amended sections in Chapter 19 [DSA-SS/CC], and Chapters 17A [DSA-SS and SS/CC] and 19A [DSA-SS], provided the design and installations are in accordance with the 2021 *International Building Code* (IBC) provisions noted in the evaluation report and the additional requirements of CBC Chapters 17A, 19 and 19A as applicable.

### 2.2 CRC:

The Eco-Dobie, described in Sections 2.0 through 7.0 of the evaluation report ESR-5330, complies with CRC Chapters 3, 4 and 5, provided the installation is in accordance with the 2021 *International Residential Code*® (IRC) provisions noted in the evaluation report and the additional requirements of CRC Chapters 3, 4 and 5, as applicable.

This supplement expires concurrently with the evaluation report, reissued January 2025 and revised May 2025.