

ICC-ES Evaluation Report

ESR-2375

Reissued October 2023

This report also contains:


Revised August 2024

- CBC Supplement

Subject to renewal October 2025

ICC-ES Evaluation Reports are not to be construed as representing aesthetics or any other attributes not specifically addressed, nor are they to be construed as an endorsement of the subject of the report or a recommendation for its use. There is no warranty by ICC Evaluation Service, LLC, express or implied, as to any finding or other matter in this report, or as to any product covered by the report.

Copyright © 2024 ICC Evaluation Service, LLC. All rights reserved.

<p>DIVISION: 07 00 00 - THERMAL AND MOISTURE PROTECTION</p> <p>Section: 07 25 00—Water-Resistive Barriers/Weather Barriers</p> <p>Section: 07 27 00—Air Barriers</p>	<p>REPORT HOLDER:</p> <p>E.I. DuPONT DE NEMOURS & COMPANY, INC. (DuPONT™) DuPONT BUILDING INNOVATIONS</p>	<p>EVALUATION SUBJECT:</p> <p>DUPONT™ TYVEK® HOMEWRAP®-STYLE 1055B; DUPONT™ TYVEK® STUCCOWRAP®-STYLE 1062X; DUPONT™ TYVEK® DRAINWRAP™-STYLE 1063X; DUPONT™ TYVEK® COMMERCIALWRAP®-STYLE 1162B; DUPONT™ TYVEK® COMMERCIALWRAP® D-STYLE 1083; AND DUPONT™ TYVEK® HEADERWRAP®</p>	
---	---	--	---

1.0 EVALUATION SCOPE

1.1 Compliance with the following codes:

- 2024, 2021, 2018 and 2015 [International Building Code® \(IBC\)](#)
- 2024, 2021, 2018 and 2015 [International Residential Code® \(IRC\)](#)
- 2024, 2021, 2018 and 2015 [International Energy Conservation Code® \(IECC\)](#)

Properties evaluated:

- Water resistance
- Surface-burning characteristics
- Air leakage
- Wall draining characteristics (DuPont™ Tyvek® StuccoWrap®-Style 1062X, DuPont™ Tyvek® DrainWrap™-Style 1063X and DuPont™ Tyvek® CommercialWrap® D-Style 1083 only) for EIFS and one-coat stucco
- Exterior walls of Types I, II, III and IV construction

1.2 Evaluation to the following green codes and/or standards:

- 2022 [California Green Building Standards Code \(CALGreen\)](#), Title 24, Part 11
- 2024, 2021, 2018 and 2015 [International Green Construction Code® \(IgCC\)](#)

- 2020, 2017, 2014 and 2011 ANSI/ASHRAE/USGBC/IES Standard 189.1—Standard for the Design of High-Performance Green Buildings, Except Low-Rise Residential Buildings
- 2020, 2015, 2012 and 2008 ICC 700 National Green Building Standard™ (ICC 700-2020, ICC 700-2015, ICC 700-2012 and ICC 700-2008)

Attributes verified:

See Section 3.1.

2.0 USES

DuPont™ Tyvek® HomeWrap®–Style 1055B; DuPont™ Tyvek® StuccoWrap®–Style 1062X; DuPont™ Tyvek® DrainWrap™–Style 1063X; DuPont™ Tyvek® CommercialWrap®–Style 1162B; DuPont™ Tyvek® CommercialWrap® D-Style 1083; and DuPont™ Tyvek® HeaderWrap® are used as water-resistive barriers on the exterior side of exterior walls of buildings of any construction type under the IBC and construction permitted under the IRC.

Under the IBC, DuPont™ Tyvek® HomeWrap®–Style 1055B; DuPont™ Tyvek® StuccoWrap®–Style 1062X; DuPont™ Tyvek® DrainWrap™–Style 1063X; and DuPont™ Tyvek® HeaderWrap® may be used on buildings of Types I, II, III or IV construction that are not greater than 40 feet (12.2 m) in height above grade plane in accordance with 2024 IBC Section 1402.6 [2021 and 2018 IBC Section 1402.5 (2015 IBC Section 1403.5)].

Under the IBC, DuPont™ Tyvek® CommercialWrap®–Style 1162B and DuPont™ Tyvek® CommercialWrap® D-Style 1083 may be used on buildings of Types I, II, III or IV construction that are not greater than 40 feet (12.2 m) in height above grade plane in accordance with 2024 IBC Section 1402.6 [2021 and 2018 IBC Section 1402.5 (2015 IBC Section 1403.5)], except as permitted under Exception 1 and 2 of 2024 IBC Section 1402.6 [Exception 1 and 2 of 2021 and 2018 IBC Section 1402.5 (Exception 1 and 2 of 2015 IBC Section 1403.5)]. The water-resistive barriers may be used for Types I, II, III or IV construction of buildings greater than 40 feet (12.2 m), see Section 4.5.2 of this report.

The water-resistive barriers comply with ASTM E2556 Type II in accordance with IBC Section 2510.6 and 2024 and 2021 IRC Section R703.7.3 and exhibit equivalent water-resistance to a 60-minute Grade D building paper as described in and the exception to 2018 and 2015 IRC Section R703.7.3.

All products may be used as air barrier materials under 2024 IRC Section N1102.5.1.2 (2021, 2018 and 2015 IRC Section N1102.4.1) and 2024 IECC Section C402.6 and R402.5 (2021, 2018 and 2015 IECC Sections C402.5 and R402.4).

In addition, DuPont™ Tyvek® StuccoWrap®–Style 1062X, DuPont™ Tyvek® DrainWrap™–Style 1063X and DuPont™ Tyvek® CommercialWrap® D-Style 1083 may be used as components of an EIFS or one-coat stucco drainage system as described in Section 4.4.

3.0 DESCRIPTION

3.1 General:

The products described in this report are comprised of nonwoven, flash spunbonded, nonperforated, olefin sheets that are manufactured from high-density polyethylene fibers combined with an ultraviolet stabilizing additive. The products have been bonded by heat and pressure into sheets with variations as described in Sections 3.2 through 3.6.

All products have a flame spread index of less than 25 and a smoke-developed index of less than 450, when tested in accordance with ASTM E84.

The water-resistive barriers have an air leakage rate not exceeding 0.02 L/s-m² at 75 Pa [0.004 cfm/ft² at 0.3 inch w.g. (1.57 psf)] when used as an air barrier material.

The attributes of the water-resistive barriers have been verified as conforming to the requirements of (i) CALGreen Section 5.407.1 for water-resistive barriers; (ii) 2024 and 2021 IgCC Section 701.3.1.2, 2018 IgCC Section 701.3.1.1 and 2015 and 2012 IgCC Section 605.1.2.1 for air barriers; (iii) 2020 ASHRAE 189.1 Section 7.3.1.2, 2017 and 2014 ASHRAE 189.1 Section 7.3.1.1 and 2011 ASHRAE 189.1 Section 7.4.2.9 for air barriers; (iv) ICC 700-2020 Sections 602.1.8; §11.602.1.8; §1202.6 & 13.104.1.4 and 2015 and ICC 700-2012 Section 602.1.8 and ICC 700-2008 Section 602.9 for water-resistive barriers. Note that decisions on compliance for those areas rest with the user of this report. The user is advised of the project-specific provisions that may be contingent upon meeting specific conditions, and the verification of those conditions is outside the scope of this report. These codes or standards often provide supplemental information as guidance.

3.2 DuPont™ Tyvek® HomeWrap®–Style 1055B:

This product is a smooth sheet with a nominal basis weight of 1.8 ounces per square yard (61 grams per square meter) and is produced in rolls of varying sizes.

3.3 DuPont™ Tyvek® StuccoWrap®–Style 1062X:

The product has a surface texture that is intended to allow for drainage of water that may get behind the exterior wall finish material. This product has a nominal basis weight of 2.1 ounces per square yard (71 grams per square meter) and is produced in rolls of varying sizes.

3.4 DuPont™ Tyvek® DrainWrap™–Style 1063X:

The product has a surface texture that is intended to allow for drainage of water that may get behind the exterior wall finish material. This product has a nominal basis weight of 2.1 ounces per square yard (71 grams per square meter) and is produced in rolls of varying sizes.

3.5 DuPont™ Tyvek® CommercialWrap®–Style 1162B:

This product is a smooth sheet with a nominal basis weight of 2.7 ounces per square yard (92 grams per square meter) and is produced in rolls of varying sizes.

3.6 DuPont™ Tyvek® HeaderWrap®:

This product is the same as Tyvek® HomeWrap®-Style 1055B, except that the rolls are narrower.

3.7 DuPont™ Tyvek® CommercialWrap® D-Style 1083:

The product has a surface texture that is intended to allow for drainage of water that may get behind the exterior wall finish material. This product has a nominal basis weight of 2.4 ounces per square yard (81 grams per square meter) and is produced in rolls of varying sizes.

4.0 INSTALLATION

4.1 General:

The manufacturer's published installation instructions and this report must be strictly adhered to. If requested by the code official, a copy of this report must be available at the jobsite during installation. In the event of a conflict between this report and the report holder's published installation instructions, this report governs.

The use of Tyvek® HeaderWrap® in conjunction with any of the products described in Sections 3.2 through 3.5 is optional. The use of tape to seal seams and edges of the products is optional, except as described in Section 4.3 and where required by the manufacturer's installation instructions.

4.2 Water-resistive Barrier:

The water-resistive barriers described in this report are installed after wall framing is completed. The roll is placed 6 to 12 inches (152 to 305 mm) from the starting corner and fastened to the sheathing with corrosion-resistant mechanical fasteners or adhesive as approved by DuPont™, and is then unrolled around the building and fastened as set forth in the manufacturer's published installation instructions at top and bottom sill plates and at framing members. A minimum of 6 inches (152 mm) of overlap is provided for vertical seams and 2 inches (51 mm) for horizontal seams, except where the manufacturer's installation instructions specify a greater overlap dimension.

When the water-resistive barriers are installed over wood-based sheathing in exterior plaster applications the water-resistive barriers may be installed in a single layer in accordance with the exception to 2018 and 2015 IBC Section 2510.6 or 2018 and 2015 IRC Section R703.7.

When the water-resistive barriers are installed over wood-based sheathing in exterior plaster application in accordance with 2024 and 2021 IBC 2510.6 and 2024 and 2021 IRC Section R703.7.3 installations must be as follows:

- For dry climate zones (B) in accordance with 2024 and 2021 IBC Section 2510.6.1 or 2024 and 2021 IRC Section R703.7.3.1, the products must be applied in accordance 2024 and 2021 IBC Section 2510.6.1 Items 1 or 2 and 2024 and 2021 IRC Section R703.7.3.1 Item 1 or 2, as applicable.
- For moist climate zones (A) or marine climate zones (C) in accordance with 2024 and 2021 IBC Section 2510.6.2 or 2024 and 2021 IRC Section R703.7.3.2, the product must be applied in accordance with dry climate zone (B) provisions noted above and with the additional requirements noted in 2024 and 2021 IBC Section 2510.6.2 Item 1 or 2024 and 2021 IRC Section R703.7.3.2 Item 1, as applicable.

For cementitious coatings or exterior insulation and finish systems, application must be in accordance with the ICC-ES evaluation report on the exterior coating system.

4.3 Air Barrier Material:

When used as an air barrier material or as a component of an air barrier assembly, the products must be installed in accordance with the manufacturer's published installation instructions and this report.

4.4 Wall Covering Assembly with Drainage:

The assembly described in this section complies with Section 4.5 of the ICC-ES Acceptance Criteria for EIFS Clad Drainage Wall Assemblies (AC235) and Section 3.2.10 of the ICC-ES Acceptance Criteria for Cementitious Exterior Wall Coatings (AC11). The assembly is limited to Type V construction, and may be used in Group R, Division 1 and 3, Occupancies. The system consists of minimum $\frac{7}{16}$ -inch-thick (11.1 mm) Exterior or Exposure 1 plywood or Exposure 1 oriented strand board applied to wood studs spaced a maximum of 16 inches (406 mm) on center and fastened in accordance with the requirements of Chapter 23 of the IBC or Chapter 6 of the IRC. Vertical board edges must butt over studs. DuPont™ Tyvek® StuccoWrap®–Style 1062X, DuPont™ Tyvek® DrainWrap™–Style 1063X or DuPont™ Tyvek® CommercialWrap® D–Style 1083 must be applied as described in Section 4.2. For EIFS, minimum 1-inch-thick (25.4 mm) flat or grooved face Type I expanded polystyrene (EPS) foam plastic boards, described in a current ICC-ES evaluation report as complying with ASTM C578, are placed over the Tyvek® StuccoWrap®, Tyvek® DrainWrap™ or Tyvek® CommercialWrap® D and fastened to the sheathing along the EPS edges and midway between the horizontal edges. The fastener spacing must not exceed 24 inches (610 mm) on center along the EPS edges. For midway locations, the fastener spacing must not exceed 16 inches (406 mm) on center and fasteners must be located within 16 inches (406 mm) of the horizontal edges. Fasteners consist of wood screws sized to meet wind resistance requirements, with minimum $\frac{1}{4}$ -inch-diameter (45 mm) plates or washers, and penetrating a minimum of $\frac{1}{4}$ inch (6.4 mm) through the sheathing. Weep screeds, as set forth in IBC Section 2512.1.2 or IRC Section R703.6.2.1, must be installed. The EIFS base coat, fabric and finish coat must be installed over the EPS in accordance with the EIFS manufacturer's ICC-ES evaluation report. The one-coat stucco system must be installed in accordance with the manufacturer's ICC-ES evaluation report.

4.5 Exterior Walls of Types I, II III and IV Construction:

4.5.1 DuPont™ Tyvek® HomeWrap®–Style 1055B; DuPont™ Tyvek® StuccoWrap®–Style 1062X; DuPont™ Tyvek® DrainWrap™–Style 1063X; and DuPont™ Tyvek® HeaderWrap® may be used on exterior walls of Types I, II, III or IV construction 40 feet or less above grade plane. The use is not limited to any specific assembly, except where the wall assembly uses foam plastic insulation it must also comply with the requirements of IBC Section 2603.5.

4.5.2 The DuPont™ Tyvek® CommercialWrap®–Style 1162B and DuPont™ Tyvek® CommercialWrap® D–Style 1083 may be used as a component of exterior walls of buildings of Type I, II, III or IV construction. Use on exterior walls greater than 40 feet in height is not limited to any specific wall assembly where the DuPont™ Tyvek® CommercialWrap®–Style 1162B and DuPont™ Tyvek® CommercialWrap® D–Style 1083 is the only combustible material as provided for in 2024 IBC Section 1402.6 Exception 1 or 2 [2021 and 2018 IBC Section 1402.5 Exception 1 or 2 (2015 IBC Section 1403.5, Exception 1 or 2)]. Where the wall assembly does not meet the requirements of 2024 IBC Section 1402.6 Exception 1 or 2 [2021 and 2018 IBC Section 1402.5 Exception 1 or 2 (2015 IBC Section 1403.5, Exception 1 or 2)], the use on exterior walls greater than 40 feet in height above grade is limited to the assemblies described in [Table 1](#) or as a component of an NFPA 285 assembly when specifically recognized in a listing approved by the code official. The use on exterior walls of Types I, II, III or IV construction 40 feet or less above grade plane is not limited to any specific assembly, except that wall assemblies that use foam plastic insulation must also comply with the requirements of IBC Section 2603.5.

5.0 CONDITIONS OF USE:

The DuPont™ Tyvek® products described in this report comply with, or are suitable alternatives to what is specified in, those codes listed in Section 1.0 of this report, subject to the following conditions:

- 5.1** The products must be installed in accordance with the manufacturer's published installation instructions, the requirements of the applicable code and this report. In the event of a conflict between this report and the manufacturer's published installation instructions, this report governs.
- 5.2** The water-resistive barriers must be covered by an exterior wall finish complying with the requirements of the applicable code.

- 5.3 When DuPont™ Tyvek® StuccoWrap®–Style 1062X, DuPont™ Tyvek® DrainWrap™–Style 1063X or DuPont™ Tyvek® CommercialWrap® D-Style 1083 are used in an EIFS wall covering assembly with drainage or a one-coat stucco assembly as described in Section 4.4, the assembly must be specifically described in the evaluation report on the EIFS or one-coat stucco.
- 5.4 This report provides air leakage rates for the products as an air barrier material only. When used as a component of an air barrier assembly, the design and evaluation of the air barrier assembly of which they are a component must be provided to the satisfaction of the code official.
- 5.5 Use of DuPont™ Tyvek® CommercialWrap®–Style 1162B and DuPont™ Tyvek® CommercialWrap® D-Style 1083 on exterior walls of buildings of Type I, II, III or IV construction must be in accordance with the requirements of Section 4.5 for the applicable edition of the code.
- 5.6 The products manufactured are under a quality control program with inspections by ICC-ES.

6.0 EVIDENCE SUBMITTED

- 6.1 Data in accordance with the [ICC-ES Acceptance Criteria for Water-resistive Barriers \(AC38\)](#), dated August 2016 (editorially revised July 2021).
- 6.2 Data in accordance with Section 4.10 of the [ICC-ES Acceptance Criteria for EIFS Clad Drainage Wall Assemblies \(AC235\)](#), dated January 2015 (editorially revised December 2022).
- 6.3 Report of testing in accordance with ASTM E84.
- 6.4 Reports of testing in accordance with ASTM E1354 for DuPont™ Tyvek® CommercialWrap®–Style 1162B and DuPont™ Tyvek® CommercialWrap® D-Style 1083.
- 6.5 Reports of testing in accordance with ASTM E2178.
- 6.6 Reports of testing in accordance with ASTM E2556 for DuPont™ Tyvek® DrainWrap™–Style 1063X
- 6.7 Reports of testing in accordance with NFPA 285 with related engineering analysis.

7.0 IDENTIFICATION

- 7.1 The ICC-ES mark of conformity, electronic labeling, or the evaluation report number (ICC-ES ESR-2375) along with the name, registered trademark, or registered logo of the report holder (DuPont™) must be included in the product label.
- 7.2 In addition, the products described in this report are identified by a label on the container of each roll of membrane, and by printing on the product that includes the report holder's name, address, and telephone number; the product name; and the evaluation report number (ESR-2375).
- 7.3 The report holder's contact information is the following:

E.I. DuPONT DE NEMOURS & COMPANY, INC. (DuPONT™)
DuPONT BUILDING INNOVATIONS
1501 LARKIN CENTER DRIVE
MIDLAND, MICHIGAN 48642
(812-212-4429)
<http://www.dupont.com>

TABLE 1
NFPA 285 ASSEMBLIES (REFER TO FIGURE 1 FOR COMPONENT LOCATIONS)

I. Base Wall System Use either 1, 2, 3, 4, or 5)	Concrete Wall
	Concrete Masonry Wall (CMU)
	Standard Clay Brick Wall
	Adobe Block Wall
	Steel Stud Framed Wall (Use a, b, c, d or e, as applicable) – Minimum 18-gauge, 3 ⁵ / ₈ -inch-deep, studs with lateral bracing every 4 feet vertically, spaced 24 inches on center maximum
	Interior Wallboard – Minimum of 1 layer of 5/ ₈ -inch-thick Type X gypsum wallboard on interior face of studs
	Interior Vapor Barrier (optional) – 1 layer of maximum 6 mil thick polyethylene plastic or equivalent can be applied
	Cavity Insulation – None or any noncombustible insulation (faced or unfaced)
	Floorline Firestopping – (where studs are outboard of the floor assembly): 4 lb/ft ³ mineral wool in each stud cavity and at each floorline – attached with Z-clips
	Exterior Sheathing – 5/ ₈ -inch-thick, exterior type gypsum sheathing
II. Air and Water Barrier Applied to I. Base Wall System or over III. Exterior Insulation (Use either 1 or 2)	DuPont™ Tyvek® CommercialWrap®–Style 1162B
	DuPont™ Tyvek® CommercialWrap® D-Style 1083
III. Exterior Insulation (Use either 1, 2, 3 or 4) ^{1,2}	None
	Any noncombustible mineral wool insulation, faced or unfaced, classified as Class A when tested in accordance with ASTM E84 or UL 723 , minimum 2 inches (51 mm) thick
	Extruded Polystyrene Foam Insulation (XPS) – Type IV complying with ASTM C578 with total thickness to be a minimum of 1/2 inch to maximum of 3-inch and described in a current ICC-ES evaluation report.
IV. Exterior Cladding ³ (Use either 1, 2, 3, 4, 5, 6, 7, 8, 9, or 10)	Brick: Standard nominal 4" thick, clay brick. Use standard brick veneer anchors installed maximum 24 inches on center vertically on each stud with a 2-inch maximum air gap between exterior insulation and brick.
	Stucco: Minimum 3/ ₄ -inch-thick, exterior cement plaster and lath. An optional secondary water-resistive barrier can be installed between the exterior insulation and the lath. The secondary water-resistive barrier shall not be full-coverage asphalt or butyl-based self-adhered membranes. (Cannot be combined with Exterior Insulation: #4-XPS)
	Stone Veneer: Minimum 2 inches thick, limestone or natural stone veneer or minimum 1 1/ ₂ -inch thick cast artificial stone veneer. Any standard installation technique can be used.
	Fiber Cement Siding or Panels: Any standard installation technique can be used. (Cannot be combined with Exterior Insulation: #4-XPS)
	Metal Exterior Wall Coverings: Including but not limited to steel, aluminum, and copper installed using standard installation techniques. (Cannot be combined with Exterior Insulation: #4-XPS)
	Terra Cotta Cladding: Use any Terra cotta cladding system in which terra cotta is minimum 1 1/ ₄ -inch-thick. Any standard installation technique can be used.
	Metal Composite Material (MCM): Mitsubishi Chemical America, ALPOLIC Division's Alpolic®/fr Wall Panels (see ICC-ES ESR-2653), Alcoa Reynobond FR 6-mm ACM panels or other MCM panel that has been tested in accordance with NFPA 285 and which is described in a current ICC-ES evaluation report. The MCM panels cannot be combined with Exterior Insulation: #4-XPS.
	Concrete Masonry Units (CMU): Minimum 4-inch-thick CMU, with a 2-inch maximum air gap between exterior insulation and CMU.
	Concrete Panels: Minimum 2-inch-thick panel, with a 2-inch maximum air gap between exterior insulation and concrete panel.
	Insulated Concrete Sandwich Panels: Minimum 2-inch-thick outer and inner faces. Maximum 2-inch air gap between panel and wall system.

For **SI**: 1 inch = 25.4 mm; 1 lb/ft³ = 16 kg/m³

Notes:

¹ On insulation joints, an asphalt or butyl-based flashing tape with a 4 inch maximum width may be used.

² Use any header treatment shown in Window Head Detail Options, [Figures 2](#) through [7](#) for all window and door openings in the exterior wall.

³ Exterior claddings must comply with the applicable provisions of IBC Chapter 14 and IRC Chapter 7

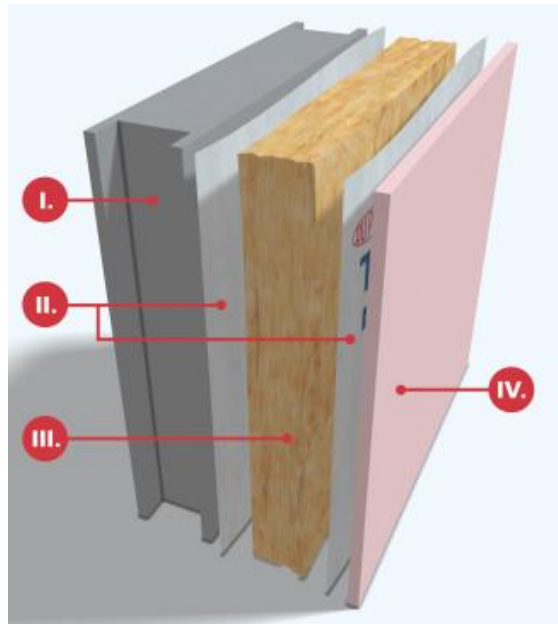
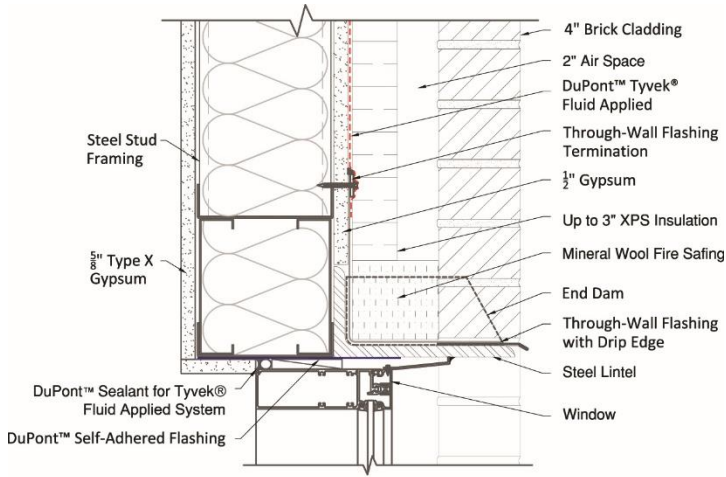
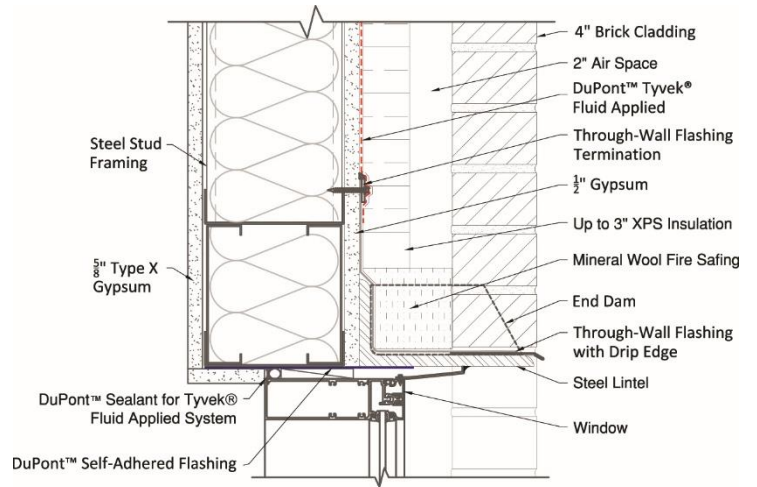


FIGURE 1
Refer to [Table 1](#) for system components.



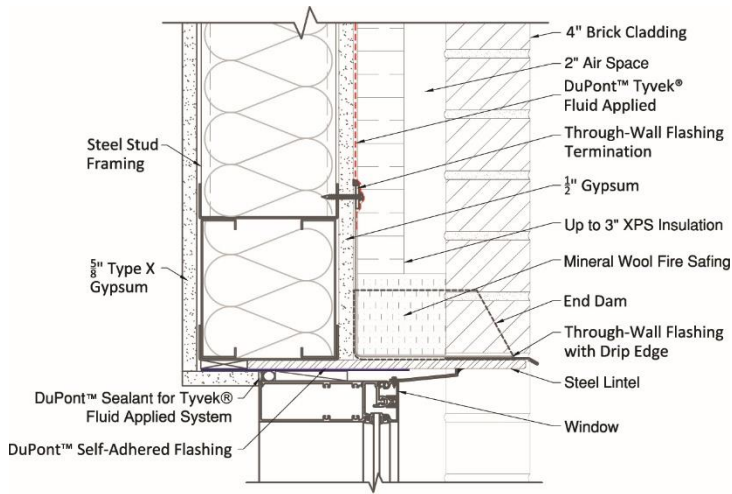
NFPA 285 Window Head
Detail Option #1

FIGURE 2



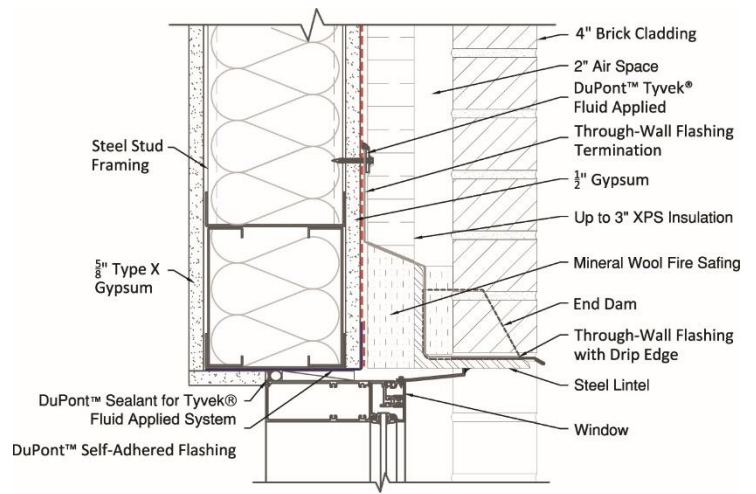
NFPA 285 Window Head
Detail Option #2

FIGURE 3



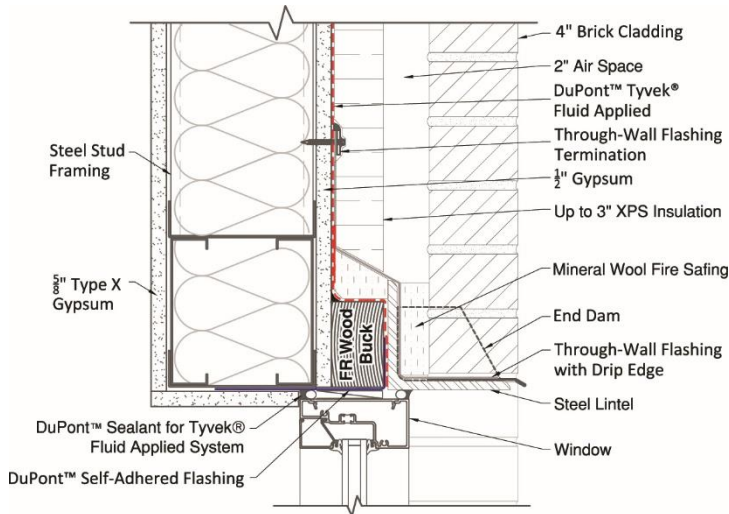
NFPA 285 Window Head Detail Option #3

FIGURE 4



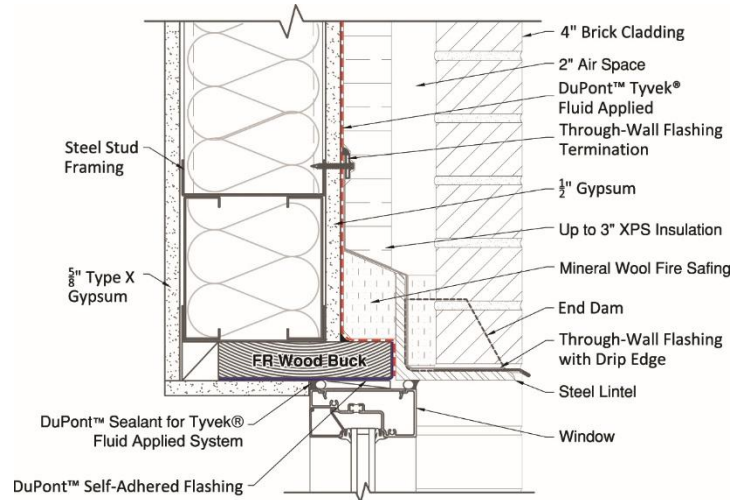
NFPA 285 Window Head Detail Option #4

FIGURE 5



NFPA 285 Window Head Detail Option #5

FIGURE 6



NFPA 285 Window Head Detail Option #6

FIGURE 7

DIVISION: 07 00 00—THERMAL AND MOISTURE PROTECTION
Section: 07 25 00—Water-Resistive Barriers/Weather Barriers
Section: 07 27 00—Air Barriers

REPORT HOLDER:

E.I. DUPONT DE NEMOURS & COMPANY, INC. (DuPONT™)
DuPONT BUILDING INNOVATIONS

EVALUATION SUBJECT:

DUPONT™ TYVEK® HOMEWRAP®—STYLE 1055B; DUPONT™ TYVEK® STUCCOWRAP®—STYLE 1062X; DUPONT™ TYVEK® DRAINWRAP®—STYLE 1063X; DUPONT™ TYVEK® COMMERCIALWRAP®—STYLE 1162B; DUPONT™ TYVEK® COMMERCIALWRAP® D—STYLE 1083; AND DUPONT™ TYVEK® HEADERWRAP®

1.0 REPORT PURPOSE AND SCOPE**Purpose:**

The purpose of this evaluation report supplement is to indicate that DuPont™ Tyvek® products, described in ICC-ES evaluation report ESR-2375, have also been evaluated for compliance with the codes noted below.

Applicable code editions:

- 2022 California Building Code (CBC)

For evaluation of applicable chapters adopted by the California Office of Statewide Health Planning and Development (OSHPD) AKA: California Department of Health Care Access and Information (HCAI) and the Division of State Architect (DSA), see Sections 2.1.1 and 2.1.2 below.

- 2022 California Residential Code (CRC)
- 2022 California Energy Code (CEC)

2.0 CONCLUSIONS**2.1 CBC:**

The DuPont™ Tyvek® products, described in Sections 2.0 through 7.0 of the evaluation report ESR-2375, comply with CBC Chapter 14, provided the design and installation are in accordance with the 2021 *International Building Code*® (IBC) provisions noted in the evaluation report and the applicable provisions of the CBC. Use as an air barrier must be in accordance with CEC.

2.1.1 OSHPD:

The applicable OSHPD Sections of the CBC are beyond the scope of this supplement.

2.1.2 DSA:

The applicable DSA Sections of the CBC are beyond the scope of this supplement.

2.2 CRC:

The DuPont™ Tyvek® products, described in Sections 2.0 through 7.0 of the evaluation report ESR-2375, comply with CRC Chapter 7, provided the design and installation are in accordance with the 2021 *International Residential Code*® (IRC) provisions noted in the evaluation report and the applicable provisions of the CRC. Use as an air barrier must be in accordance with the CEC.

This supplement expires concurrently with the evaluation report, reissued October 2023 and revised August 2024.