



# ICC-ES Listing Report

## ESL-1231

Reissued August 2023

This listing is subject to renewal August 2024.

**CSI:** DIVISION: 07 00 00—THERMAL AND MOISTURE PROTECTION  
Section 07 42 00—Wall Panels  
Section 07 44 00—Faced Panels

### Product Certification System:

The ICC-ES product-certification system includes evaluating reports of tests of standard manufactured product, prepared by accredited testing laboratories and provided by the listee, to verify compliance with applicable codes and standards. The system also involves factory inspections, and assessment and surveillance of the listee's quality system.

**Product:** 3MM BONDED PRE-PAINTED SHEET AS3000B

**Listee:** ARCONIC ARCHITECTURAL PRODUCTS, LLC

**Evaluation:** 3mm Bonded Pre-painted Sheet AS3000 bonded sheets were evaluated based on a tested exterior non-load-bearing wall assembly consisting of building materials components described in the Assembly Section, tested in accordance with the following standard:

- CAN/ULC-S134-13-R2018, Standard Method of Fire Test of Exterior Wall Assemblies, Standards Council of Canada and ULC Standards.

**Assembly:** 3mm Bonded Pre-painted Sheet AS3000B are prefabricated sheets consisting of two 3000 series aluminum sheets bonded together with an adhesive to an overall panel thickness of 3 mm (0.118 inch); the sheets and the concealed fastening system are installed on the exterior face of exterior walls of buildings. See Figure 1 for assembly details.

**Exterior Finish:** One layer of minimum 12.7 mm (½-inch ) thick glass mat exterior gypsum sheathing, complying with ASTM C1177, must be placed horizontally across the full exterior surface of the assembly. The gypsum sheathing must be fastened to the exterior wall in accordance with applicable building code requirements. Wrap Shield SA® water resistive self-adhesive air barrier must be applied directly over the exterior sheathing. 16 GA thick by 51 mm (2-inch) wide galvanized steel zeos must be installed horizontally to the exterior wall in accordance with applicable building code requirements. A 51 mm (2-inch) thick mineral wool insulation having a density of 68.9 kg/m<sup>3</sup> (4.3 lbs/ft<sup>3</sup>) must then be friction fitted in the cavities between the zeos. 3mm Bonded Pre-painted Sheet AS3000B sheets are must be fabricated with a rout and return perimeter. The fabricated sheets must be fastened to a rainscreen system as shown in Figure 1 having 12.7 mm (½-inch ) joints. A 44.5 mm (1.75-inch) wide AS3000B reveal must be installed at the joints.

**Window Detailing:** The opening headers must be flashed using 1 mm (0.040 in.) thick aluminum flashing attached with 7.9 mm (5/16-in.) hex head, self-drilling fasteners. Aluminum L-flashing must be applied on the exterior sheathing around the window frame with a 51 mm (2-inch leg) up to the interior sheathing; the flashing must be overlapped from the outside by 51 mm (2 inches).

**Findings:** The assembly described in the Assembly Section, with the 3mm Bonded Pre-painted Sheet AS3000B as a component of the wall assembly, meets the acceptance criteria as noted in Clause 10.2. of CAN/ULC-S134, and as referenced in the applicable sections of the following code editions.

- *National Building Code of Canada*® 2015  
Applicable Section: Volume 1, Division B, Section 3.1.5.5.(1)  
Applicable Sections: Volume 2, Division B, Sections 9.10.14.5.(2); 9.10.15.5.(2); and 9.10.15.5.(3)

**Identification:**

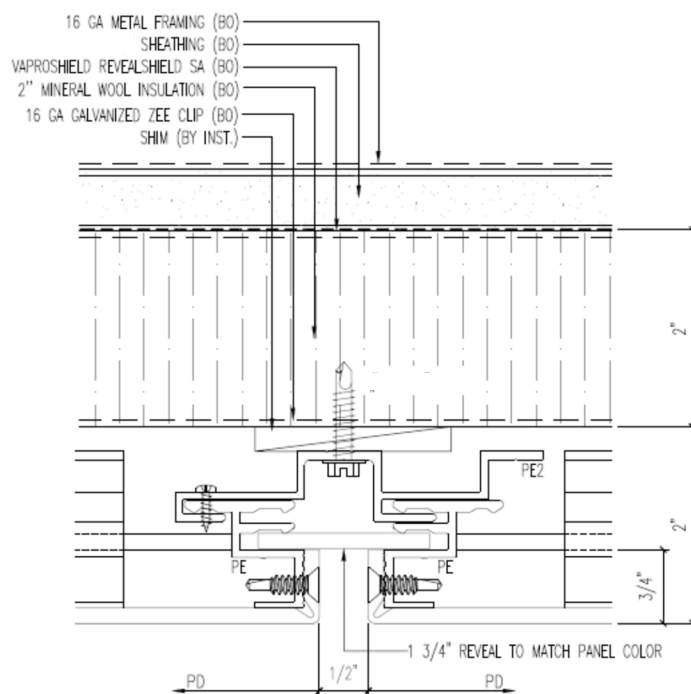
1. Packaging of the 3mm Bonded Pre-painted Sheet AS3000B carries a label indicating the manufacturer's name (ARCONIC ARCHITECTURAL PRODUCTS, LLC) and address, the product name (3mm Bonded Pre-painted Sheet AS3000B), ICC-ES listing number (ESL-1231), and when applicable, the ICC-ES listing mark.
2. The report holder's contact information is the following:

**ARCONIC ARCHITECTURAL PRODUCTS, LLC**  
**50 INDUSTRIAL BOULEVARD**  
**EASTMAN, GEORGIA 31023**  
**(478) 374-4746**  
[www.reynobond.com](http://www.reynobond.com)

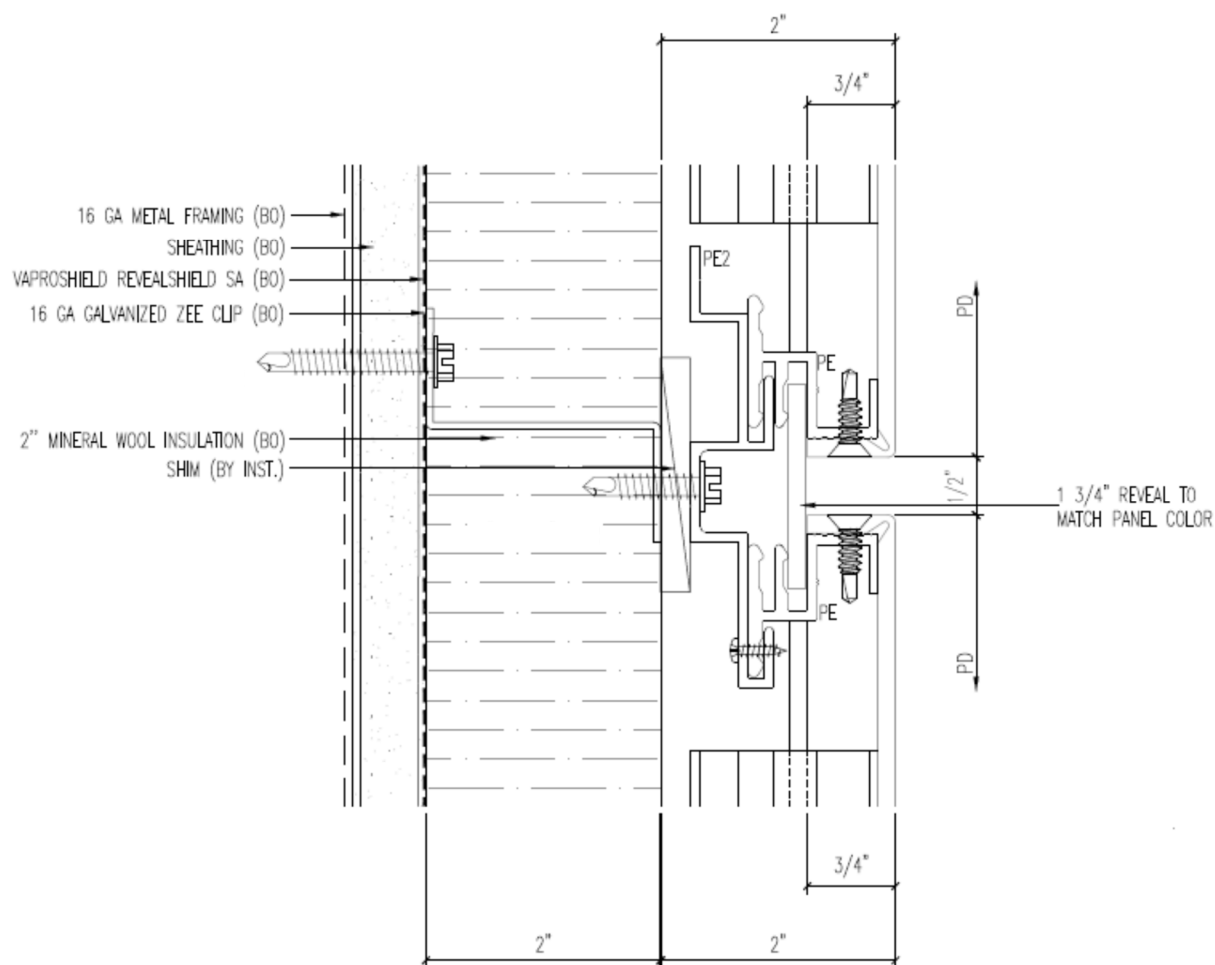
**Installation:** The product must be installed in accordance with the Arconic Architectural Products LLC's published installation instructions and applicable codes.

**Conditions of listing:**

1. The listing report addresses only conformance with the standard and code sections noted above.
2. Approval of the product's use is the sole responsibility of the local code official.
3. The listing report applies only to the materials tested and as submitted for review by ICC-ES.
4. 3mm Bonded Pre-painted Sheet AS3000B sheets have met the following acceptance criteria in accordance with Clause 10.2 of CAN/ULC-S134:
  - Flaming on or in the wall assembly shall not spread more than 5 m above the opening in the test specimen as describe in the Assembly Section.
  - The average heat flux shall not be more than 35 kW/m<sup>2</sup> measured 3.5 m above the opening in the test specimen as describe in the Assembly Section.
5. 3mm Bonded Pre-painted Sheet AS3000B sheets are manufactured under quality control program inspections by ICC-ES.



(A) VERTICAL



(B) HORIZONTAL

FIGURE 1—ASSEMBLY DETAILS (VERTICAL AND HORIZONTAL)