



ICC-ES Listing Report

Reissued August 2023

ESL-1229

This listing is subject to renewal August 2024.

CSI: DIVISION: 07 00 00—THERMAL AND MOISTURE PROTECTION
Section: 07 42 00—Wall Panels
Section: 07 44 00—Faced Panels

Product Certification System:

The ICC-ES product-certification system includes evaluating reports of tests of standard manufactured product, prepared by accredited testing laboratories and provided by the listee, to verify compliance with applicable codes and standards. The system also involves factory inspections, and assessment and surveillance of the listee's quality system.

Product: 3MM BONDED PRE-PAINTED SHEET AS3000B

Listee: ARCONIC ARCHITECTURAL PRODUCTS, LLC

Evaluation: 3mm Bonded Pre-painted Sheet AS3000 bonded sheets were evaluated for use in Types I, II, III or IV construction based on a tested exterior non-load-bearing wall assembly consisting of building materials components described in the Assembly Section, tested in accordance with the following standard:

NFPA 285 (-17, -12 and -06), Standard Fire Test Method for the Evaluation of Fire Propagation Characteristics of Exterior Non-load-bearing Wall Assemblies Containing Combustible Components, National Fire Protection Association.

Assembly: 3mm Bonded Pre-painted Sheet AS3000B are prefabricated sheets consisting of two Type 3000 series aluminum sheets bonded together with an adhesive to an overall panel thickness of 0.118 inch (3mm); the sheets and the concealed fastening system are installed on the exterior face of exterior walls of buildings required to be of Type I, II, III, or IV construction with the following conditions. See Figure 1 for assembly details.

Interior Finish: The interior surface of the wall assembly must be clad with one layer of 5/8-inch-thick (15.9 mm), Type X gypsum wallboard, complying with ASTM C1396. The gypsum wallboard must be fastened to the wall framing with No. 6 1¼-inch long (31.8 mm), bugle head, self-drilling screws with a nominal spacing of 8-inch (203 mm) around the board perimeter and 12-inch (305 mm) in the field. The joints and fastener heads must receive a Level 2 finish using joint tape and joint compound in accordance with ASTM C840 or GA216.

The wall must be framed with 18 GA galvanized steel studs spaced 16 in. on-center (406 mm) fastened to 18 GA galvanized steel track. The studs must be connected to the track with one No. 6 x ½-in. long self-drilling, pan head fastener per stud flange. Minimum 8-inch thick (203 mm) mineral wool safig pieces, with a nominal density of 4 lbs/ft³ (64 kg/m³) must be installed per the manufacturer's installation instructions to fit into each stud cavity placed at each floor line.

Exterior Finish: One layer of ½-inch (12.7 mm) thick glass mat exterior gypsum sheathing, complying with ASTM C1177, must be placed horizontally across the full exterior surface of the assembly. The gypsum sheathing must be fastened to the wall framing with No. 6 x 1¼-in. (31.8 mm) long, bugle head, self-drilling screws with a nominal spacing of 8 in. (203 mm) around the board perimeter and 12 in. (305 mm) in the field. Wrap Shield SA® water resistive self-adhesive air barrier must be applied directly to the exterior of the exterior sheathing, with a minimum 4 in. (101.6 mm) overlap at all seams. Closure angle pieces 16 GA, galvanized steel, double-zee closure girt must be installed horizontally from the base of the floor to the top edge of the base wall using No. 8 x 1¾-in. (44.5 mm) long self-drilling screws. 2-inch (50.8 mm) mineral wool insulation having a density of 8 lbs/ft³ (128 kg/m³) must then be friction fitted in the cavities between girts. 3mm Bonded Pre-painted Sheet AS3000B sheets are must be fabricated with a rout and return perimeter. The fabricated sheets must be fastened to a rainscreen system as shown in Figure 1 having ½-inch (12.7 mm) joints. A 1.75-inch wide (44.5 mm) AS3000B reveal must be installed at the joints.

ICC-ES Evaluation Reports are not to be construed as representing aesthetics or any other attributes not specifically addressed, nor are they to be construed as an endorsement of the subject of the report or a recommendation for its use. There is no warranty by ICC Evaluation Service, LLC, express or implied, as to any finding or other matter in this report, or as to any product covered by the report.



Window Detailing: The opening headers must be flashed using 0.040 in. aluminum flashing attached with $\frac{5}{16}$ -in. hex head, self-drilling fasteners. Aluminum L-flashing must be applied on the exterior sheathing around the window frame with a 2-inch leg (50.8 mm) up to the interior sheathing; the flashing must be overlapped from the outside by 2 inches (50.8 mm).

Findings: The assembly described in the Assembly Section, with the 3mm Bonded Pre-painted Sheet AS3000B as a component of the wall assembly, complies with the conditions of acceptance described in NFPA 285 when tested in accordance with NFPA 285 for use in Types I, II, III or IV construction, as referenced in the applicable sections of the following code editions.

- 2018 *International Building Code*®
Applicable Sections: 104.11 and 1402.5
- 2015, and 2012 *International Building Code*®
Applicable Sections: 104.11 and 1403.5

Identification:

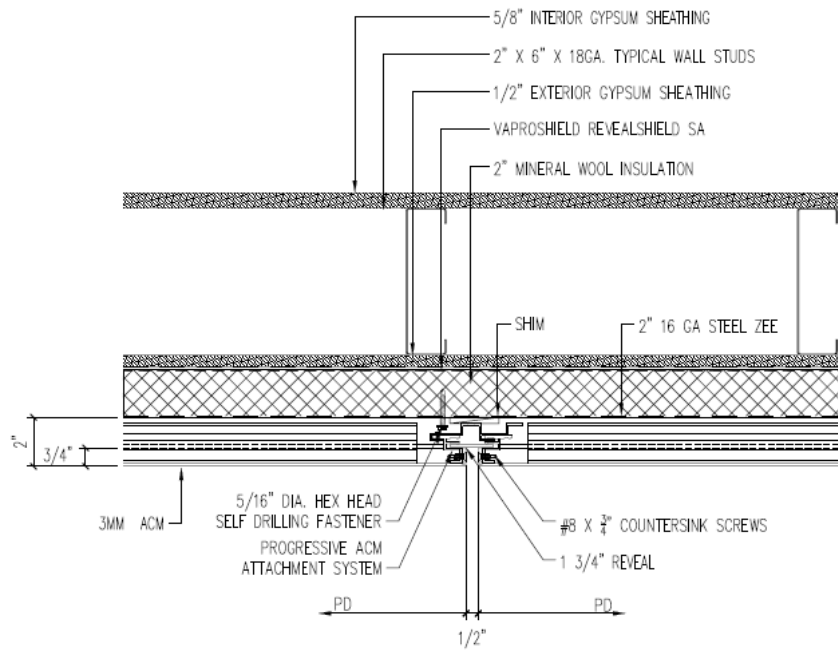
1. Packaging of the 3mm Bonded Pre-painted Sheet AS3000B carries a label indicating the manufacturer's name (ARCONIC ARCHITECTURAL PRODUCTS, LLC) and address, the product name (3mm Bonded Pre-painted Sheet AS3000B), ICC-ES listing number (ESL-1229), and when applicable, the ICC-ES listing mark.
2. The report holder's contact information is the following:

ARCONIC ARCHITECTURAL PRODUCTS, LLC
50 INDUSTRIAL BOULEVARD
EASTMAN, GEORGIA 31023
(478) 374-4746
www.reynobond.com

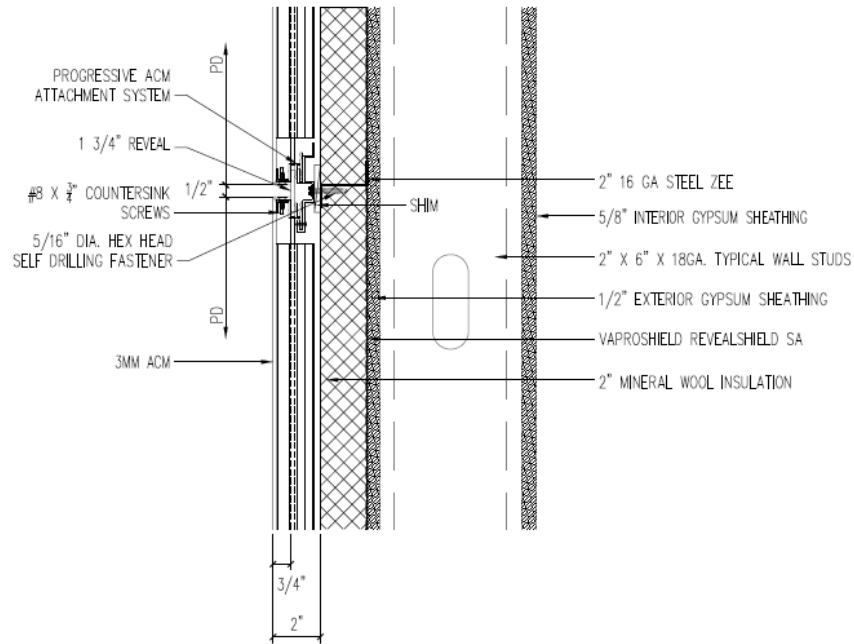
Installation: The product must be installed in accordance with the Arconic Architectural Products LLC's published installation instructions and applicable codes.

Conditions of listing:

1. The listing report addresses only conformance with the standard and code sections noted above.
2. Approval of the product's use is the sole responsibility of the local code official.
3. The listing report applies only to the materials tested and as submitted for review by ICC-ES.
4. The Assembly section describes the assembly using 3mm Bonded Pre-painted Sheet AS3000B that have been qualified for use in Types I, II, III or IV construction of exterior nonload-bearing wall assembly.
5. 3mm Bonded Pre-painted Sheet AS3000B sheets are manufactured under quality control program inspections by ICC-ES.



(A) VERTICAL



(B) HORIZONTAL

FIGURE 1: ASSEMBLY DETAILS (VERTICAL AND HORIZONTAL)