



ICC-ES Listing Report ESL-1163

Reissued January 2024

This listing is subject to renewal January 2025.

CSI: DIVISION: 04 00 00 – MASONRY
Section: 04 22 00 – Concrete Unit Masonry

Product Certification System:

The ICC-ES product-certification system includes evaluating reports of tests of standard manufactured product, prepared by accredited testing laboratories and provided by the listee, to verify compliance with applicable codes and standards. The system also involves factory inspections, and assessment and surveillance of the listee's quality system.

Product: SpeedBlock Masonry Units

Listee: SpeedBlock Inc.

Evaluation: The SpeedBlock Masonry Units were evaluated to the following standards:

- ASTM C90 (-16a and -14), Specification for Loadbearing Concrete Masonry Units, ASTM International.

Findings: The SpeedBlock Masonry Units, when tested in accordance with the requirements in ASTM C90, have met the minimum face shell and web requirements, and strength, absorption and density requirements of Table 1 and 2 of ASTM C90, respectively, for a nominal 8-inches (203 mm) wide normal weight density. ASTM C90 is referenced under Article 2.3 of TMS-602, as referenced in the applicable sections of the following code editions.

- 2021 and 2018 *International Building Code*®
Applicable Section: 2103.1
- 2021 and 2018 *International Residential Code*®
Applicable Section: R606.2.1

Description of product:

The SpeedBlock Masonry Units are wet-cast manufactured concrete hollow rectangular-shaped blocks that come in nominal 32 inches (813 mm) high with two standard widths of nominal 8 inches (203 mm) and nominal 12 inches (305 mm) and standard length of 288 inches (7315 mm). The typical weight for a 8 inches wide by 32 inches high by 288 inches long (203 mm by 813 mm by 7315 mm) SpeedBlock unit is 2,305 lbs. (1046 kg). See Figures 1 and 2 for details.

Identification:

1. Packaging of the SpeedBlock Masonry Units carries a label indicating the manufacturer's name and address, the product name, the ICC-ES listing report (ESL-1163) and when applicable, the ICC-ES Listing Mark.
2. The report holder's contact information is the following:

SPEEDBLOCK INC.
943 INDUSTRIAL AVENUE
PALO ALTO, CALIFORNIA 94303
(650) 387-9215
www.speedblock.com

Installation: The product must be installed in accordance with the SpeedBlock Inc.'s published Technical Manual, dated July 4, 2019, and applicable codes. See Figures 3 through 5 for typical hardware and installation details.

Conditions of listing:

1. The listing report addresses only conformance with the standard and code sections noted above.
2. Approval of the product's use is the sole responsibility of the local code official.
3. The listing report applies only to the materials tested and as submitted for review by ICC-ES.
4. The SpeedBlock Masonry Units are manufactured under a quality control program with inspections by ICC-ES.

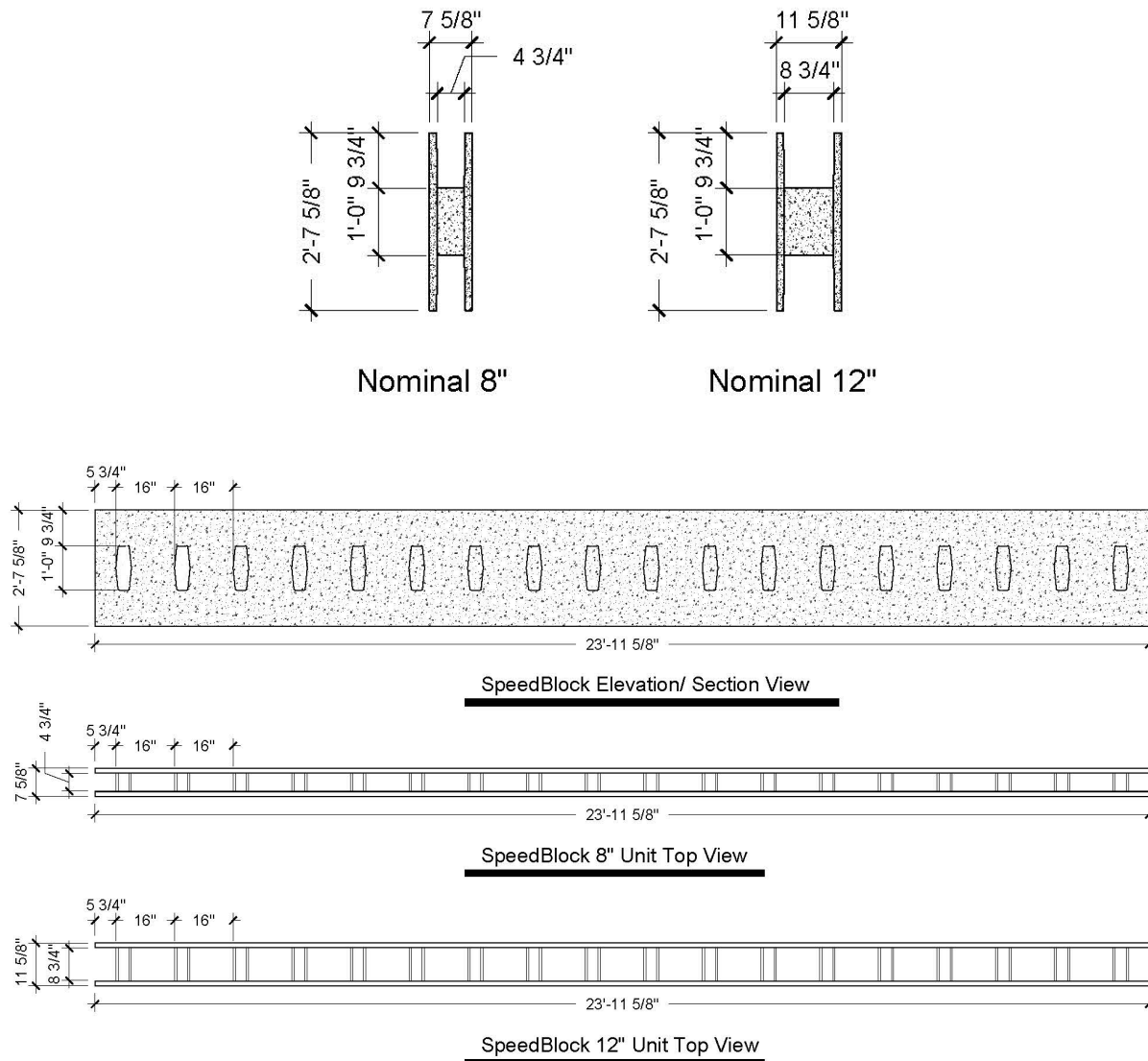
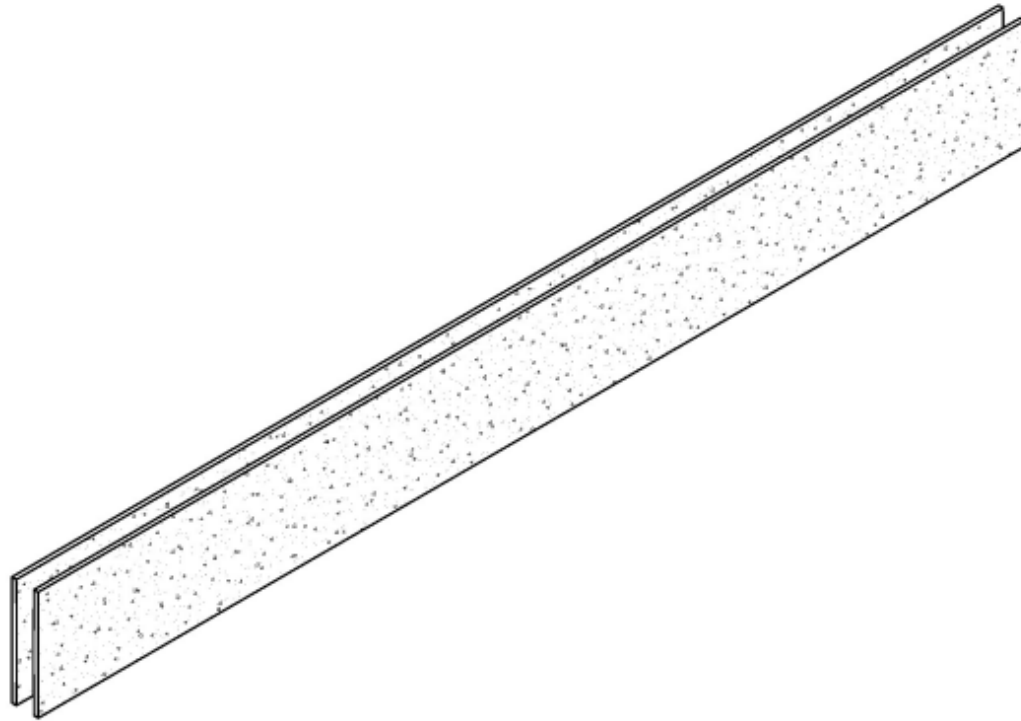


FIGURE 1 – SPEEDBLOCK MASONRY UNIT – STANDARD WIDTHS AND LENGTHS (1 in.=25.4 mm)



8" x 32" x 288" Precision Unit

FIGURE 2 – SPEEDBLOCK MASONRY UNIT (TYPICAL) (1 in. = 24.5 mm)

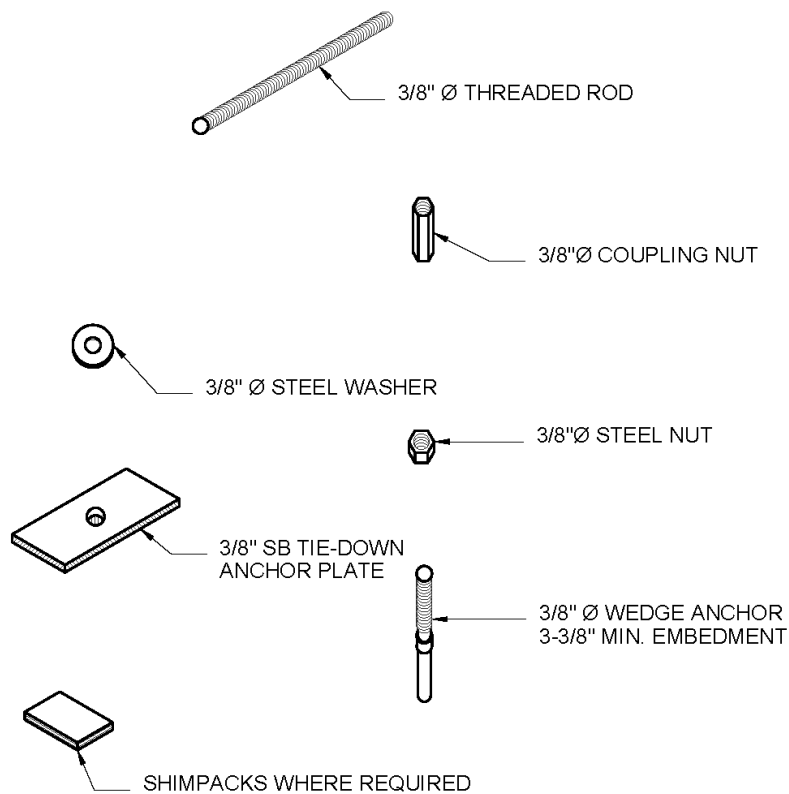


FIGURE 3 – TYPICAL HARDWARE USED FOR SPEEDBLOCK INSTALLATION (1 in.=25.4 mm)

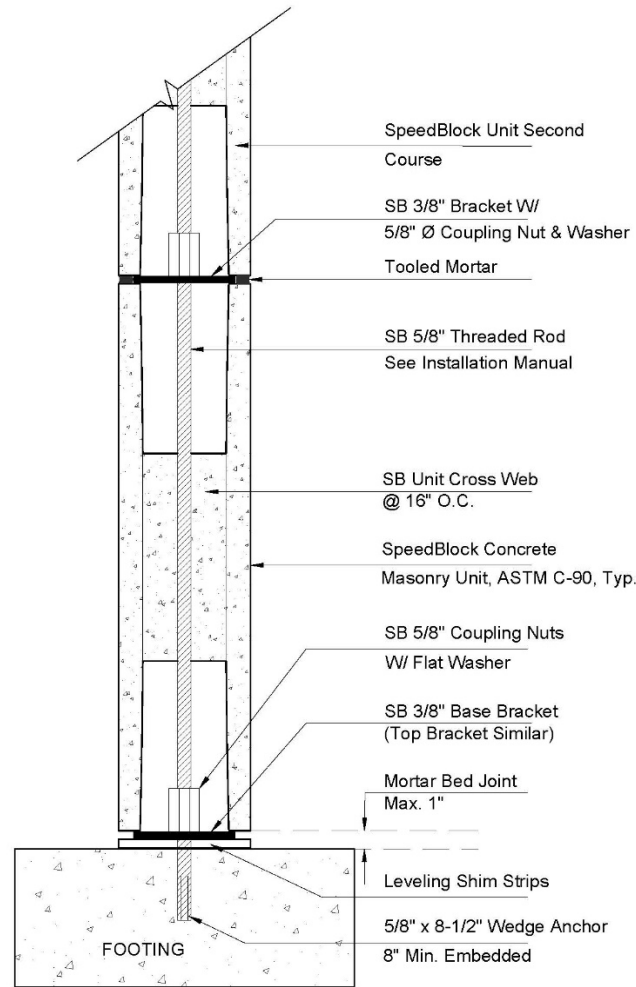


FIGURE 4 – INSTALLATION DETAIL (1 in.=25.4 mm)

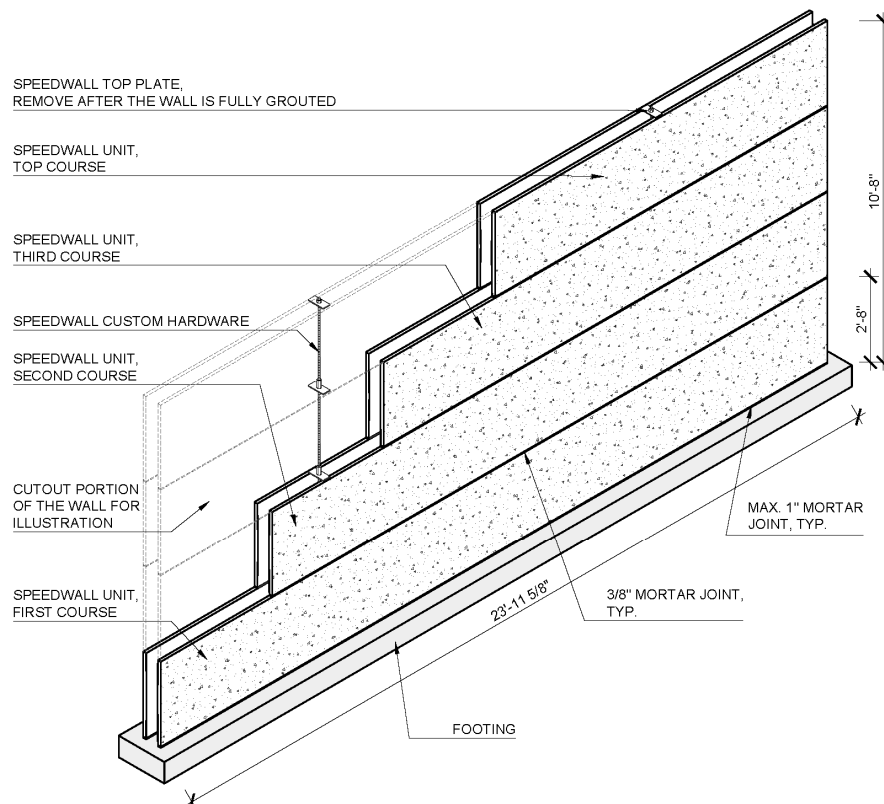


FIGURE 5 – SPEEDBLOCK WALL ASSEMBLY INSTALLATION (1 in.=25.4 mm)